



SHAWN DORFLINGER
MANAGER

Power Play

Simple safety lessons for a safer summer

Children don't always know the dangers of electricity and electrical equipment. With May recognized as Electrical Safety Month, it's an ideal time to reinforce simple lessons that can help kids stay safe all summer long.

Young imaginations often turn the unfamiliar into something fun or inviting, which can make electrical equipment especially dangerous. Take time to point out overhead power lines, utility poles and other electrical equipment, and explain what they are and why they should be avoided.

Teach children these important rules:

- Never climb trees near power lines. Even if lines aren't touching the branches, they can shift and make contact when weight is added.
- Kites, drones and model airplanes should only be flown in good weather and in wide-open spaces such as parks or large fields. Keep them far from overhead power lines and substations. If a kite or toy becomes tangled near power lines, never try to retrieve it. Electricity can travel through strings or wires.
- Never climb a utility pole or tower. These structures carry high voltage electricity that can be deadly.
- Stay away from pad-mounted electrical equipment. These green metal boxes, often found on concrete pads, contain transformers and should never be played on or



Teach children to stay away from big green metal boxes known as pad-mounted transformers that carry high-voltage electrical equipment.

around.

- Never enter an electric substation. High voltage equipment inside can cause severe shock, even without direct contact.
- Seek shelter immediately if thunder is heard or lightning is seen while playing outdoors.
- Teach children never to touch electrical appliances while in a pool or hot tub and to keep all electrical devices at least 10 feet away from water. Swimming during a storm is never safe.

Protect your family by installing ground fault circuit interrupters (GFCIs) on outdoor outlets and in rooms where water is present. GFCIs shut off power instantly if a problem is detected and are affordable and widely available.

Use caution with outdoor electrical appliances, even when plugged into GFCI outlets. Never use damaged extension cords and always keep the ground prong intact.

Flooded areas are especially dangerous and may hide energized equipment or downed power lines.

Always assume a downed power line is energized. Stay far away and teach children to report fallen or hanging wires to an adult immediately. If you encounter a downed line, call 911 and keep others clear.

At Ouachita Electric, safety is our top priority, and we're committed to helping your family stay safe year-round.

OUACHITA ELECTRIC WILL BE CLOSED MAY 25TH FOR
Memorial Day.
NORMAL BUSINESS HOURS WILL RESUME MAY 26TH.

Ouachita Electric Cooperative Corporation

Ouachita Electric directors receive national certifications

Director Gold is a National Rural Electric Cooperative Association (NRECA) certificate program geared toward directors who are committed to continuing their education and who desire a tangible credential that reinforces their stature as part of a group of experienced and educated directors. Congratulations to Ouachita Electric Board of Directors members Danny Adams, Walt Pigott, Lisa Hendrix and Dr. Corbet Lamkin on this achievement.



Ouachita Electric attends generation facility groundbreaking

Ouachita Electric was proud to have members of our Board of Directors and management team represented as Arkansas Electric Cooperative Corporation broke ground on a new 850-megawatt (MW) natural gas-based generation facility in Morris County, Texas, near Naples.

Slated for commercial operation in 2029, the facility will power communities for decades to come. Together, we're investing in a brighter, more reliable energy future for our members.



(From left) Ouachita Electric General Manager Shawn Dorflinger, Director Dr. Corbet Lamkin, Manager of Administrative Services Angie McLendon and Director David Kelley.



ADDRESS

700 Bradley Ferry Road
Camden

BOARD MEMBERS

Danny Adams
Kelly Belt
Randy Harper
Lisa Hendrix
Sheila Johnson
David Kelley
Dr. Corbet Lamkin
David McLeane
Walt Pigott

CONTACT US

(877) 252-4538

PAY BILL

ebill.oecc.com/
onlineportal/
(877) 252-4538

REPORT OUTAGES

(844) 326-4624

CONNECT ONLINE

oecc.com

FOLLOW US ON

Facebook



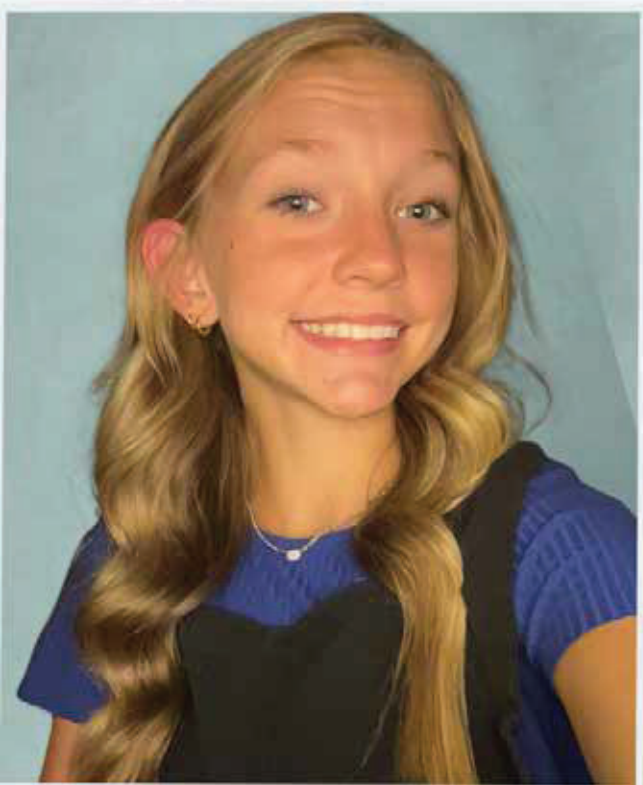
DOWNLOAD

OECC App

**OUACHITA ELECTRIC
COOPERATIVE**

2026 YOUTH TOUR DELEGATES

MAKE ^{YOUR} MARK!



AUDREY BETHEA
HAMPTON HIGH SCHOOL



BAILEY BROWN
HARMONY GROVE HIGH SCHOOL



**Ouachita Electric
Cooperative Corporation**

